

Erratom to: DISTRIBUTION OF CHIRONOMIDAE (DIPTERA-INSECTA) SPECIES OF DAĞKÜPLÜ STREAM (ESKİŞEHİR), 15(2): 112-116, 2022

Bu düzeltme yazısı “**DISTRIBUTION OF CHIRONOMIDAE (DIPTERA-INSECTA) SPECIES OF DAĞKÜPLÜ STREAM (ESKİŞEHİR), 15(2): 112-116, 2022**” başlıklı makalenin, editör ve hakem değerlendirmeleri sonucunda yazara önerilmiş olan düzeltmelerin yapılmış olduğu makale metni yerine sehven yazarın ilk gönderdiği makalenin basılmış olduğunun anlaşılması üzerine yayınlanmıştır. Makale içerisinde yapılan düzeltmeler aşağıda verilmiş olup, çalışmanın, bulgular, bilimsel içeriği ve sonucuna etki edecek herhangi bir durum söz konusu değildir.

Yapılan düzeltmeler;

1. Sayfa 112’de Materials and Methods bölümündeki 3.paragraf 1.satırdaki “hand scoop” şeklinde olan kelime “hand net” şeklinde değiştirilmiştir.
2. Sayfa 114’de yer alan Tablo 1’de “Station Coordinates” şeklinde olan kelime “Station Coordinates (N, E)” şeklinde değiştirilmiştir.
3. Metin içinde ve “Kaynaklar” bölümünde yer alan kaynakça numaralandırılmaları düzeltilmiştir.


DISTRIBUTION OF CHIRONOMIDAE (DIPTERA-INSECTA) SPECIES OF DAĞKÜPLÜ STREAM (ESKİŞEHİR)

Tuğrul Öntürk^{1,a}

¹Eskişehir Osmangazi University, Faculty of Sciences, Department of Biology, Eskişehir, Turkey

*Corresponding Author:
E-mail: tugrulonturk@gmail.com

(Received 31st October 2022; accepted 10th December 2022)

a:  ORCID 0000-0002-6358-6112

ABSTRACT. Samples were collected from 6 stations between March and June 2021 from Dağküplü Stream, which is located approximately 35 km from Eskişehir city center. As a result of the examination of the collected samples, 8 taxa from Chironominae, 3 taxa from Orthocladiinae and 3 taxa from Tanypodinae, a total of 14 taxa were identified.

Keywords: *chironomidae, dağküplü, eskisehir*

INTRODUCTION

Dağküplü Stream is formed by the merging of the spring water coming out of the upper part of Dağküplü Village, which is approximately 35 km from the center of Eskişehir, and the small water currents that join the creek branch.

It arises from Dağküplü village and merges with Sakarya River, which passes through the town of Mayıslar, which is approximately 12 km downstream.

With the onset of the summer season, the flow of water below becomes a leak due to the decrease in water flow and the use of agricultural irrigation.

As in many river systems in our country, the water level in Dağküplü Stream decreases considerably towards the end of the summer months.

Although similar studies have been carried out in nearby regions, no research has been found on Chironomidae related to Dağküplü stream.

There are many studies on various macro and micro invertebrates both in Eskişehir and its surroundings and in the surrounding provinces. Some examples of these are; Polatdemir N., Şahin Y. 1997, Öntürk, T., Arslan, N. 2002; Kıymaz, 2018; Şahin (1980, 1987, 1991, 1998).

MATERIALS AND METHODS

Samples were collected from 6 stations between March and June in 2021 from the Dağküplü creek, which is approximately 35 km from the centre of Eskişehir “**Fig. 1**”.

The coordinates of the stations where the sampling operations were performed are given in “**Table 1**”.

The samples were collected with the help of a hand net, and the macroscopic individuals, which were sorted in situ by passing through sieves with 60, 80 mesh intervals, were taken into small tubes containing 70% alcohol. The ones that were too

small to be sorted out were taken into glass jars containing 4% formaldehyde and brought to the laboratory.

The samples extracted for diagnosis were examined by preparing the head capsule and body separately in glycerin. In species identification Cranston (1982), Fittkau ve Roback (1983), Hirvenoja (1973), Klink ve Moller Pillot (2003), Şahin (1980, 1987, 1991, 1998), Wiederholm (1983) were used.

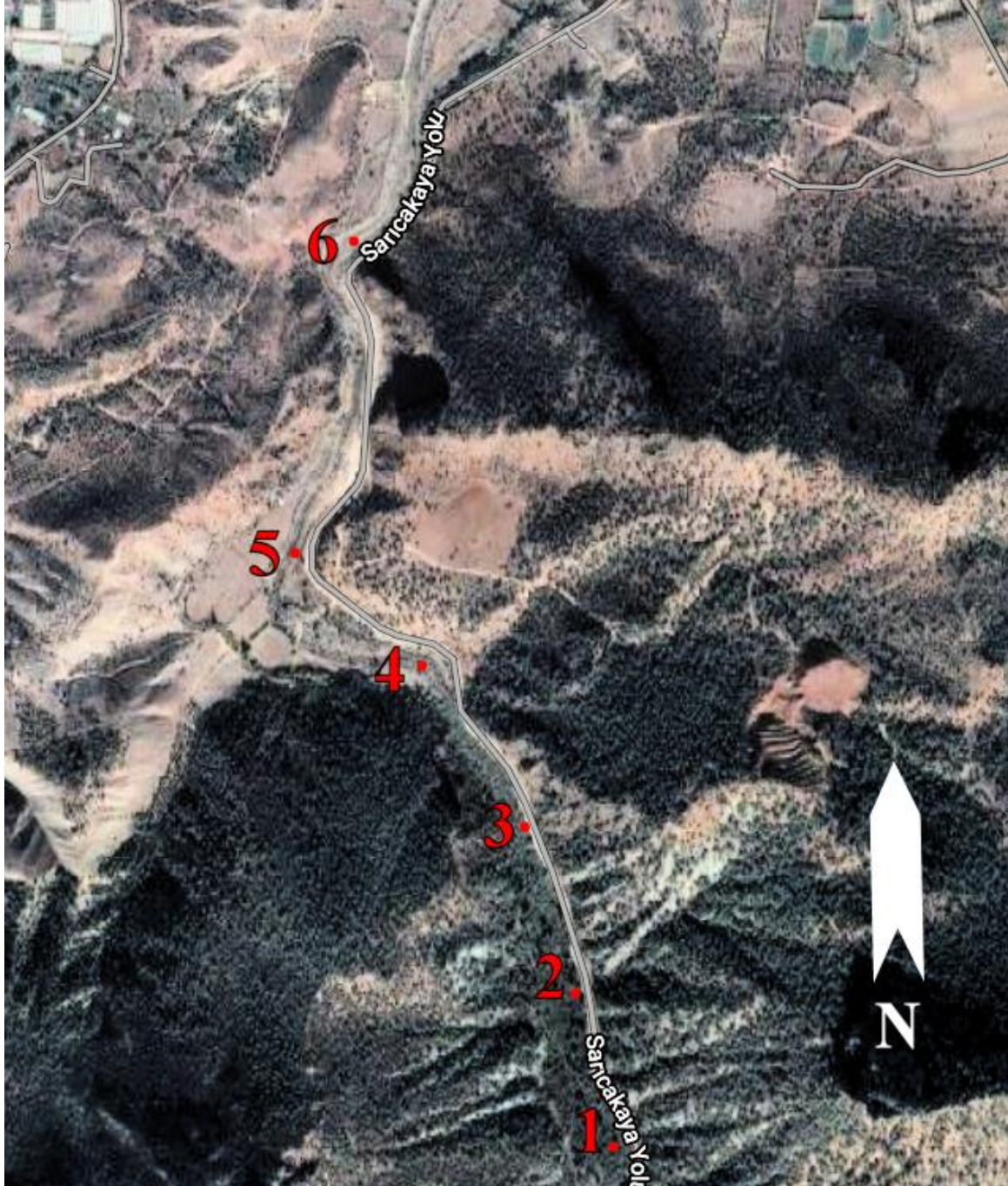


Fig. 1. Study area and stations.

Table 1. Sampling stations coordinates.

Station Coordinates (N, E)	
1st Sta.	40.018017, 30.657652
2nd Sta.	40.019508, 30.656751
3rd Sta.	40.022379, 30.655909
4th Sta.	40.024668, 30.653999
5th Sta.	40.026259, 30.651491
6th Sta.	40.030264, 30.652566

RESULTS AND DISCUSSION

As a result of our study, 14 taxa have been identified. The distribution of the detected species according to the stations is given in "Table 2".

While Chironomidae takes place with the most 8 taxa, Tanypodinae and Orthocladiinae are included with 3 taxa each.

Microtendipes pedellus (De Geer 1776) and *Chironomus sp.* were detected at all stations. *Procladius sp.* it was only detected at station 4.

When look at the species distribution according to the stations, stations 3 and 4 come to the fore the most. 11 taxa were identified at these stations. The least number of taxa is found at station 6 with 3 taxa. This is followed by the station number 1 with 5 taxa. 9 taxa were identified at station 2 and 8 taxa at station 5.

Table 2. Distribution of taxa belonging to Chironomidae at stations.

Taxa	Station Number					
	1	2	3	4	5	6
Tanypodinae <i>Conchapelopia sp.</i>	-	+	-	+	-	-
<i>Procladius sp.</i>	-	-	-	+	-	-
<i>Procladius (Holotanypus) sp.</i>	-	+	-	+	-	-
Orthocladiinae <i>Cricotopus (Isocladius) sylvestris</i> (Fabricius 1794)	-	+	+	+	-	-
<i>Cricotopus (C.) viereriensis</i> Goetghebuer 1935	-	-	+	-	+	-
<i>Orthocladius sp.</i>	-	-	+	+	+	+
Chironominae <i>Chironomus sp.</i>	+	+	+	+	+	+
<i>Polypedilum (T.) scalaenum</i> (Schrank, 1803)	+	+	+	+	+	-
<i>Chironomus (C.) anthracinus</i> Zetterstedt, 1860	-	+	+	+	-	-
<i>Chironomus (C.) plumosus</i> (Linnaeus, 1758)	+	+	+	-	-	-
<i>Cryptochironomus defectus</i> (Kieffer 1913)	-	-	+	+	+	-
<i>Micropsectra sp.</i>	+	+	+	-	+	-
<i>Tanytarsus sp.</i>	-	-	+	+	+	-
<i>Microtendipes pedellus</i> (De Geer 1776)	+	+	+	+	+	+

Changes in water quality affect Chironomidae taxa as well as many invertebrate taxa [13].

Chironomidae species are one of the most common invertebrate species in almost every season. When examine in general, see that Chironominae species are dominant in almost all stations.

In station 1, Tanypodinae and Orthocladiinae taxa were not found.

CONCLUSION

Many water systems in our country are in danger due to both global climate changes and regional variables.

In Chironomidae taxa, the longest life cycle is spent in the larval stage. Therefore, they have an important role in benthic biomass formation. In addition, they are observed in many different environments as they can survive in high tolerance ranges during the larval stage [14].

Because of these features, Chironomidae larvae play an important role in determining the water quality. Can that it is the only insect species that can live even in waters with very little dissolved oxygen [15].

Chironominae species can tolerate high temperatures and low oxygen [15].

REFERENCES

- [1] Kıymaz, G. (2018): Aşağı Gediz Havzası Nehir Sularının Kalitesinin Değerlendirilmesi ve Fizikokimyasal Parametrelerin Makroomurgasız Üzerine Etkilerinin İncelenmesi. Çevre Mühendisliği Anabilim Dalı Yüksek Lisans Tezi. Ankara.
- [2] Öntürk, T., Arslan, N. (2002): Gümüş Çayı (Mardin-Kısıltepe) Oligochaeta (Annelida) ve Chironomidae (Diptera) Faunasının Belirlenmesine Yönelik Ön Çalışmalar. XII. Ulusal Su Ürünleri Sempozyumu Bildiriler Kitabı. ISBN: 975-394-049-1. Elazığ, pp. 82-86.
- [3] Polatdemir N, Şahin Y (1997). Eskişehir ve çevresi durgun su sistemleri Chironomidae (Diptera). Turkish Journal of Zoology, 21(3), 315 - 319.
- [4] Şahin, Y. (1980): Elazığ ve kısmen çevre illerinin Chironomidae (Diptera) limnofaunasının tespiti ve taksonomik incelenmesi. Fırat Üni. Veterinerlik Fakültesi Dergisi. 5.1. pp. 180-182,
- [5] Şahin, Y. (1987): Eğridir Gölü Chironomidae (Diptera) larvaları ve yayılışları. Doğa Tur. Zooloji. D. 11.1 pp. 60-66.
- [6] Şahin, Y. (1991): Türkiye Chironomidae Potamofaunası (TBAG-869 ve VHAG-347, TBAG-669. TBAG-792 nolu projeler).
- [7] Şahin, Y. (1998): Sakarya Nehir Sistemi Omurgasız Potamofaunası'nın Tespiti. TÜBİTAK YDABÇAG -194 No'lu Proje.
- [8] Cranston, P. S., (1982): A Key to The Larvae of The British Orthocladiinae (Chironomidae). Freshwater Biological Association Scientific Publication No. 45: 1-152.

- [9] Fittkau, E. J. and S. S. Roback, (1983): The larvae of Tanypodinae (Diptera: Chironomidae) of the Holarctic region- Keys and diagnoses. *Entomologica Scandinavica*, Suppl. 19: 33- 110.
- [10] Hirvenoja, M. (1973): Revision der Gattung *Cricotopus* van der Wulp und ihrer Verwandten (Diptera, Chironomidae) *Ann. Zool. Fennici* 10: 1-363.
- [11] Klink, A.G. and H.K.M. Moller Pillot. (2003): Chironomidae larvae. Key to the Higher Taxa and Species of the Lowlands of Northwestern Europe. World Biodiversity Database, Expert Center for Taxonomic Identification, University of Amsterdam.
- [12] Wiederholm, T., (1983): Chironomidae of the Holarctic region. Keys and diagnoses. Part I. Larvae. *Entomologica Scandinavica*, 19, 1-457.
- [13] Gündüz, O., Şimşek, C. (2021): Assessment of river alteration using a new hydromorphological index. *Environ Monit Assess* 193, 226. <https://doi.org/10.1007/s10661-021-09018-w>
- [14] Rosenberg, D. M. and V. H. Resh, (1993): Freshwater biomonitoring and benthic macroinvertebrates, Chapman and Hall, New York, 1-488.
- [15] Armitage, P., P. S. Cranston, L. C. V. Pinder. (1995): The Chironomidae. The biology and ecology of non-biting midges. Chapman and Hall, London , pp 1-572.